

Meaningful Innovation.

INSTRUCTION MANUAL

LED SOLAR FLOODLIGHT



02 YEAR WARRANTY **IP65 RATING**

INTRODUCTION & WARRANTY

Thank you for selecting and buying V-TAC product. V-TAC will serve you the best. Please read these instructions carefully before starting the installing and keep this manual handy for future reference. If you have any another query, please contact our dealer or local vendor from whom you have purchased the product. They are trained and ready to serve you at the best. The warranty is valid for 2 years from the date of purchase. The warranty does not apply to damage caused by incorrect installation or abnormal wear and tear. The company gives no warranty against damage to any surface due to incorrect removal and installation of the product. This product is warranted for manufacturing defects only.



MULTI-LANGUAGE MANUAL QR CODE

Please scan the QR code to access the manual in multiple languages.

TECHNICAL DATA:

MODEL	SKU	LUMENS	DC VOLTAGE	SOLAR PANEL WATTS	PANEL SIZE	UNIT SIZE	BATTERY CAPACITY	OPERATION TEMPERATURE	CHARGING TIME	WORKING TIME	INSTALLATION HEIGHT
VT-80W	7823,7824 7839,7840	400LM	6V	6W	174x216mm	170x190x55mm	3.2V, 5000mah	-20°C~60°C	4-6 H	12 H	2.5 - 3 M
VT-80W	7823,7824 7841,7842	800LM	6V	10W	174x340mm	170x190x55mm	3.2V, 6000mah	-20°C~60°C	4-6H	12H	3 - 3.5 M
VT-100W	7823,7826 7843,7844	1000LM	6V	15W	235x350mm	180x235x55mm	3.2V, 12000mah	-20°C~60°C	4-6H	12H	3.5 - 4 M
VT-180W	7827,7828 7845,7846	1800LM	6V	20W	390x300mm	235x290x55mm	3.2V, 16000mah	-20°C~60°C	4-6H	12H	4 - 4.5 M
VT-240W	7829,7830 7847,7848	2600LM	6V	30W	390x340mm	260x365x55mm	3.2V, 20000mah	-20°C~60°C	4-6H	12H	4.5 - 5 M

WARNING!

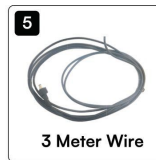
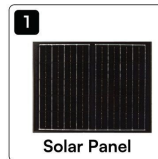
- Please make sure to turn off the power before starting the installation.
- Installation must be performed by a qualified electrician.
- The light source of this luminaire is not replaceable; when the light source reaches its end of life the whole luminaire shall be replaced.
- If the external flexible cable or cord of this luminaire is damaged, it shall be exclusively replaced by the manufacturer or his service agent or a similar qualified person in order to avoid a hazard.
- Replace any cracked protective shield.



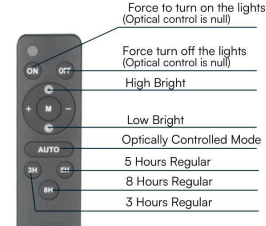
This marking indicates that this product should not be disposed of with other household wastes.



PARTS INCLUDED

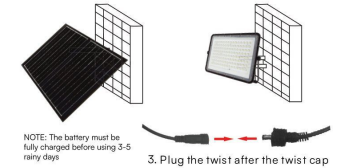


REMOTE CONTROL



INSTALLATION

- Use 2 expansion screws to fix the solar panels on the wall
- Use 2 expansion screws to all fix the solar lamp on the wall



INSTALLATION GUIDE:

- Before installing please remove all the parts to check if all are in good condition or not.
- The luminaire is connected to the solar panel against the sun light. Please makes sure the solar panel is adjusted in correct angle in order to receive sunlight.
- The remote control is designed with an operation distance of 8-15m
- A. The lamp comes with two inflated studs as shown in the parts included section.
B. The solar panel Angle must be adjusted in correct direction to receive sunlight.
C. Lamps cannot be installed in low-lying areas, so as not to soak;
5. Plug the male and female plugs and tighten the waterproof cap and install it.
6. After installation test the light using the remote control.

MAINTENANCE & WARNING

- Do not use solvents, petrol, etc. Otherwise the light will be damaged.
- Clean the light with a dry, lint-free cloth.
- Check the solar panel for dirt regularly. If dirt or is present remove it to guarantee flawless function of the product.
- Especially during the winter, keep the product free from snow and ice.
- Confirm installation direction is correct (solar panel should be at top)
- Confirm no objects blocking the solar panel to receive sunlight
- Keep away from the fire.
- Don't immerse in the water